



Focus & Fusion

**Cygnus** 70

3D Automated  
Breast Ultrasound System

All in One

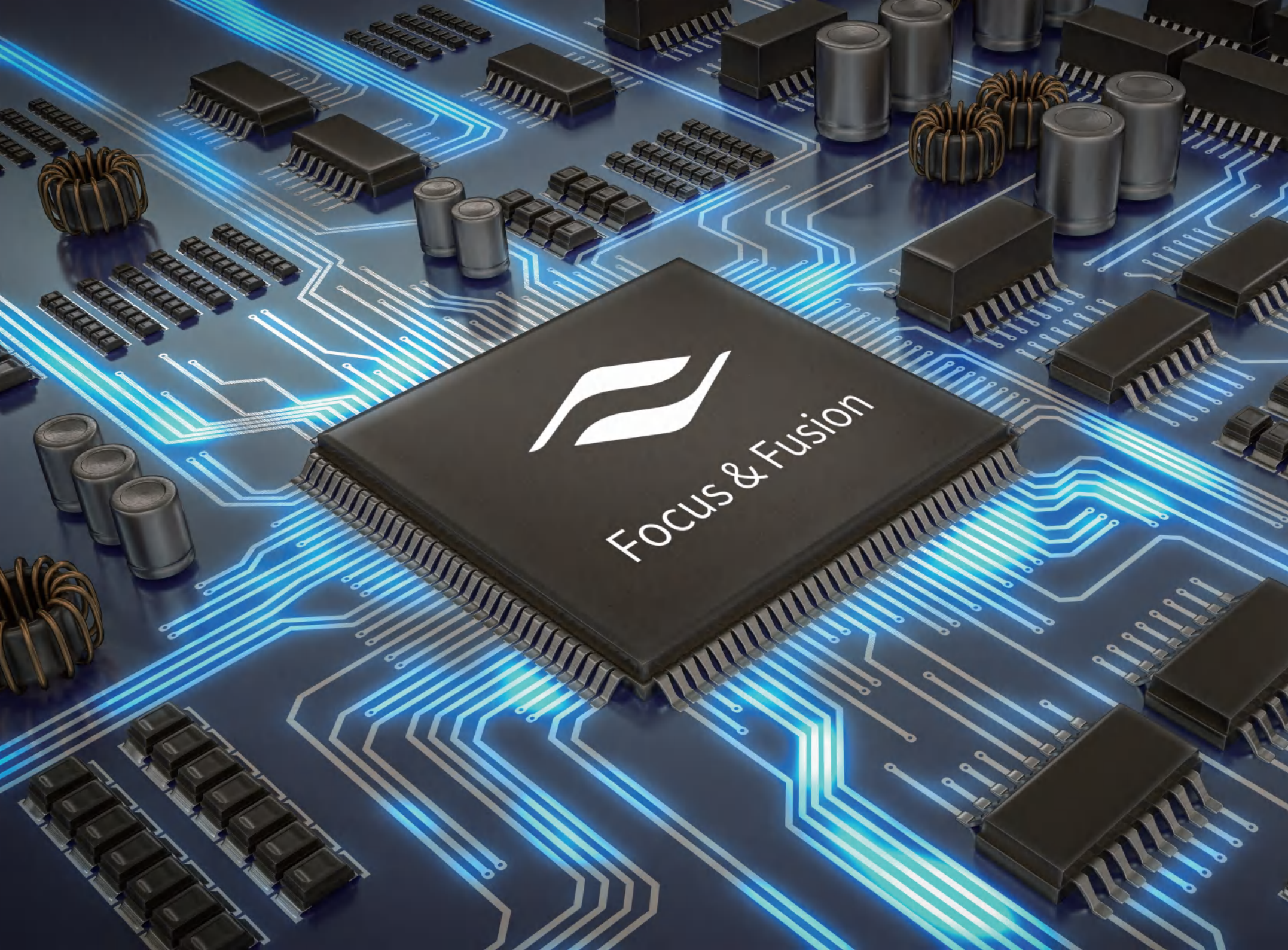


Self-Developed to  
Provide High-End Quality



## Multimodal 3D Breast Ultrasound

The multi-modality 3D breast ultrasound integrated system pioneered by Focus & Fusion Healthcare, which enables the separation of scanning and diagnosis to improve the diagnostic efficiency, is equipped with HHUS to improve the diagnostic confidence, providing a new clinical ultrasound solution for breast diseases, integrating screening, diagnosis, treatment and quality control in one, creating a new era of breast disease diagnosis and treatment.



## High

### High Platform

The high-end platform dedicated to 3D Breast Ultrasound, adopting the new acoustic architecture, with the multi-beamforming technology and utilizes CPU+GPU dual drive engine to directly process the stored RF data. Through powerful data processing capabilities, it enables all-round deep processing of 2D and 3D images, resulting in high penetration and high resolution images.

### High Elements

Based on BTM transducer technology, using advanced piezoelectric crystal materials, the micro-meter curved multi-element structure to develop the industry's highest number of elements, the ultra-wide bandwidth breast dedicated concave transducer. It could fully cover the breast structure with high scanning efficiency and comfortable experience.

### High Resolution

With high platform and high element transducer, it provides a perfect balance between 2D image information and volume acquisition speed, resulting in high resolution breast ultrasound images, bringing a new reading experience to the doctors.

## Fast

### Fast Scanning

The original acoustic conductive membrane design eliminates the need to apply large amounts of couplant to let the transducer interact well with the skin. It can improve the sound conduction performance and improve the speed of scanning simultaneously.

### Fast Transmission

3D volumetric data can be transferred quickly after acquisition to the image analysis workstation, allowing the doctor diagnoses while the nurse is scanning.

### Fast Diagnosis

Free up the diagnostic doctor's scanning effort to focus more on image analysis, resulting in better diagnosis. Together with intelligent image reading assistant, the basic diagnosis classification can be completed quickly, thus improving diagnostic efficiency.

## Accurate

### Accurate Scanning

Automatic standardised scanning to produce standard whole breast image data with high reproducibility and a large scan area which could reduce the incidence of missed scans.

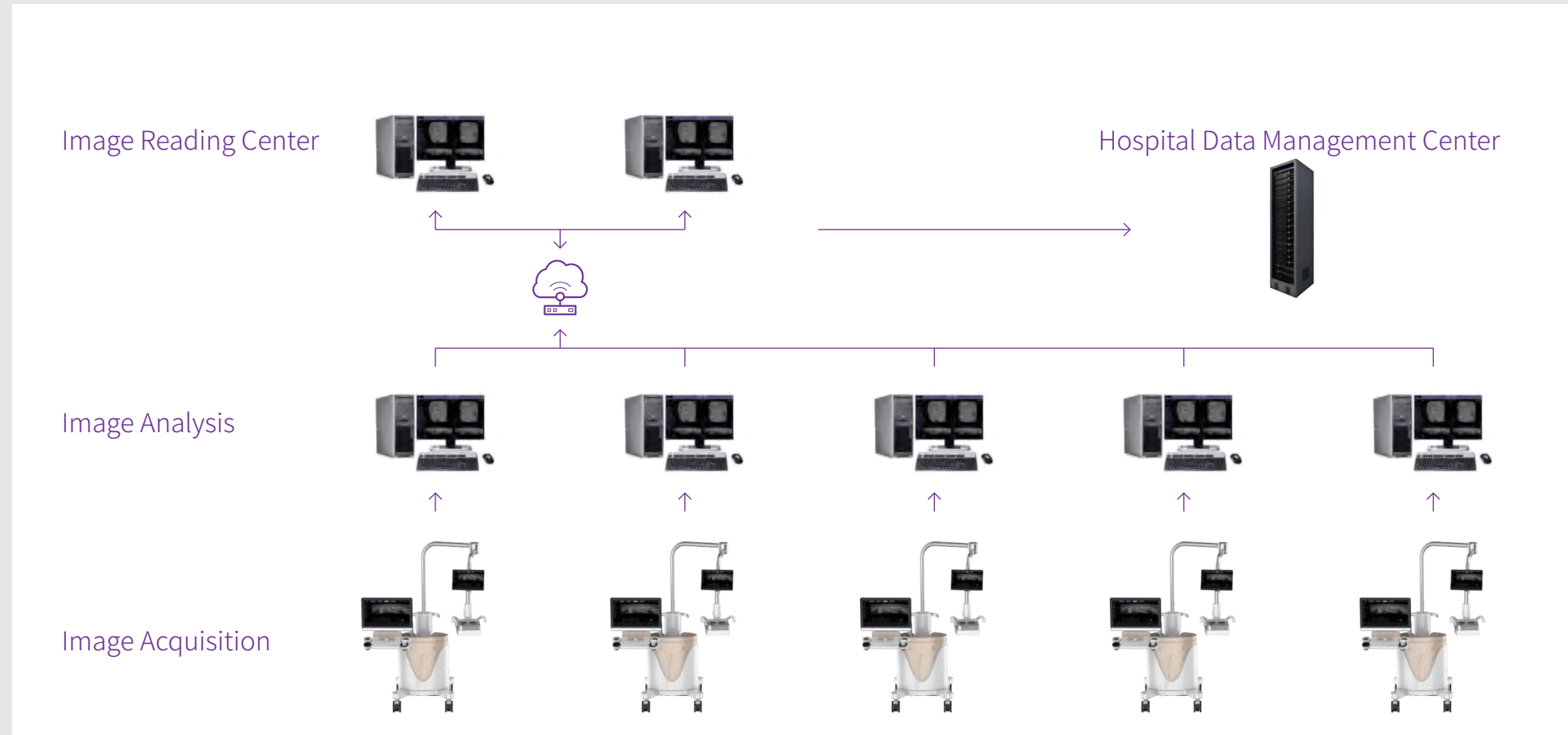
### Accurate Imaging

Three-dimensional imaging with comparison of three cross-sectional views on the same screen, more direct display of coronal images with intuitive precision and can improve diagnostic accuracy.

### Accurate Diagnosis

The handheld transducer could effectively do further diagnosis of lesions— 2D, color, spectrum, elastography, contrast ..... Allows for further accurate diagnosis.

# Remote Cloud Diagnostic Solution



# f-detect Intelligent Image Reading Assistant

The screenshots demonstrate the f-detect Intelligent Image Reading Assistant software interface. The main display shows a multi-panel view of an ultrasound image with various analysis tools and data overlays.

- Reading images automatically**
- Mark suspicious lesions automatically**
- Lesion features edit**
- Automatic rendering of lesion**

The interface includes a large main image, a smaller inset image showing a zoomed-in view of a lesion, and a control panel for editing lesion features. The software automatically identifies and marks suspicious lesions, allowing for manual editing and automatic rendering of the final lesion.

# Comfortable Design Shows Humanistic Care

The appearance is simple and friendly, the color scheme is warm and elegant, and the details are round and soft, fully reflecting the care for women's health.

## Simple Control Panel



Minimalist panel design, retaining only the most core functions of the ultrasound examination, enhancing the exam efficiency.

01

## Multi-Axis Linkage Support Arm



Large coverage, hassle-free movement, suitable for different inspection environment space requirements.

02

## Dual Touch Screen



The design of dual touch screen greatly increases the freedom of operation, and the simultaneous interaction between the control module and the scanning module is designed with full consideration of ergonomics, increasing the ergonomic compatibility for the operator.

03

## Breast Volume Concave Transducer



The design of concave transducer is unique in China, breaking through transducer development limit and fitting the female physiological curve, only for the pursuit of more accurate image quality and more comfortable experience of the subjects.

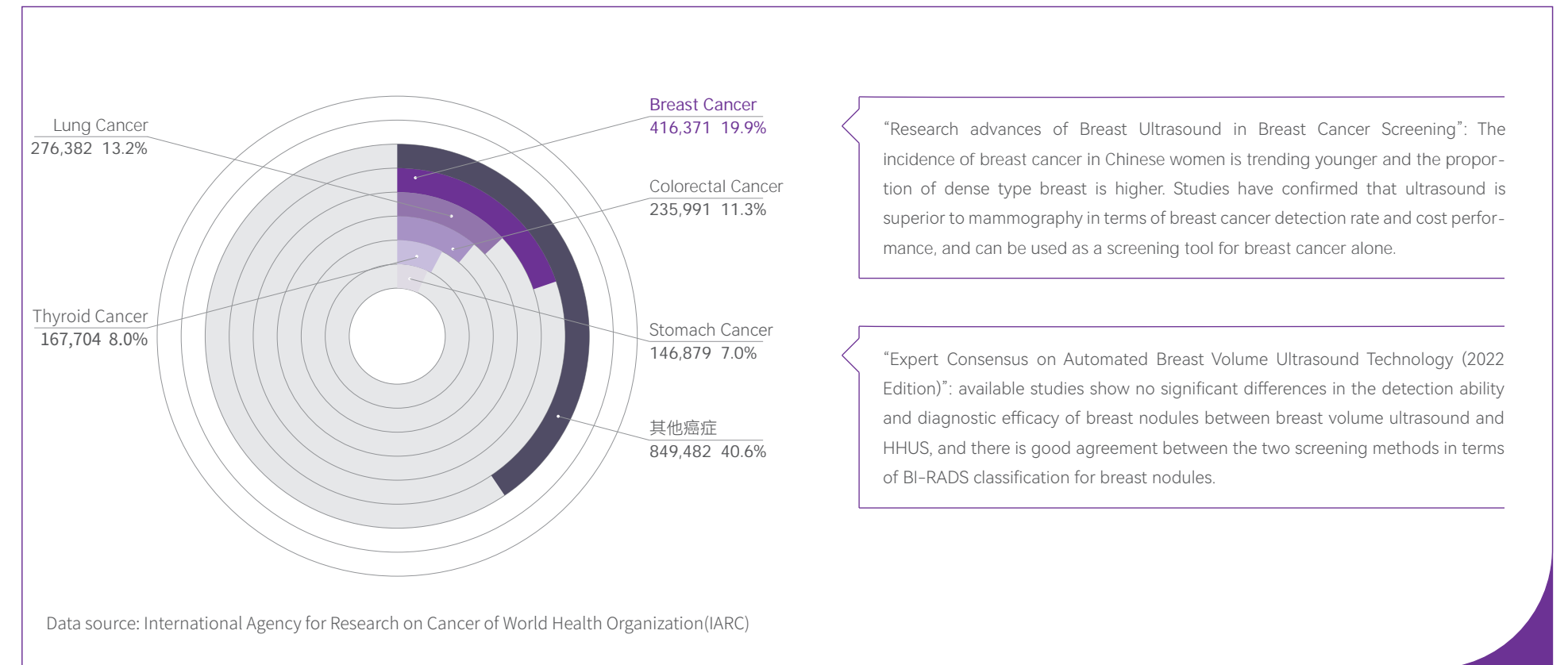
04

Guard Health  
We Serve with Heart



## Early Detection, Early Treatment

The key to control breast cancer



# The Global Leader in Breast Cancer Screening Solutions



3D scanning to obtain standard images



Breast volume concave transducer to improve image quality



Separation between scanning and diagnosis to optimize doctor configuration



Auxiliary diagnosis to improve screening efficiency



## New Assistant for Breast Diagnosis

- Focused sweeping of axilla
- Describe more completely for BI-RADS classification report
- Multi-modality imaging enables more accurate diagnostic classification
- Obtain lesion location information quickly based on volumetric data
- Confirm benign and malignant lesions finally with puncture-assisted biopsy



# Accurate Data Provider for Breast Treatment Solutions

- ✓ 3D imaging, accurate positioning
- ✓ Postoperative evaluation of efficacy
- ✓ Accurate calculation of lesion volume
- ✓ All-round observation of lesion infiltration
- ✓ Assessment of number and location of lesions
- ✓ Assessing lesion risk for clinical decision making
- ✓ Targeted evaluation according to different surgical procedures
- ✓ Evaluation of the efficacy of NACT neoadjuvant chemotherapy
- ✓ Provides real-time monitoring of intraoperative puncture guidance/ablation



## New Directions in Breast Quality Control



Establishing patient breast health records



Establishing a standard ultrasound image database



Comparative analysis of ultrasound images in different periods

# Technology Lights Up Life

Focus & Fusion Healthcare (Hangzhou) Co., Ltd.

Building 4, No.17 Binhe Road, Linan District, Hangzhou 311305, Zhejiang, P.R.China

Tel: +86 571 58612035

Email: [ims@focus-fusion.com](mailto:ims@focus-fusion.com)

Website: [www.focus-fusion.com](http://www.focus-fusion.com)



Facebook



LinkedIn