



Focus & Fusion

# Cetus 40

Ultrasound Diagnostic System

## Powerful and Versatile



reddot winner 2022



# Cetus 40

## Your Powerful and Versatile Tool for Everyday

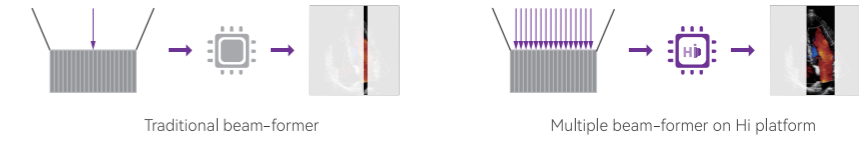
Cetus 40 is a new expert of cart-based color Doppler ultrasound scanner, combining excellent performance, efficient workflow and versatile applications. It can be used in different applications, for example, radiology, OB/GYN, cardiology, pediatrics, MSK, etc.



## Advanced Platform

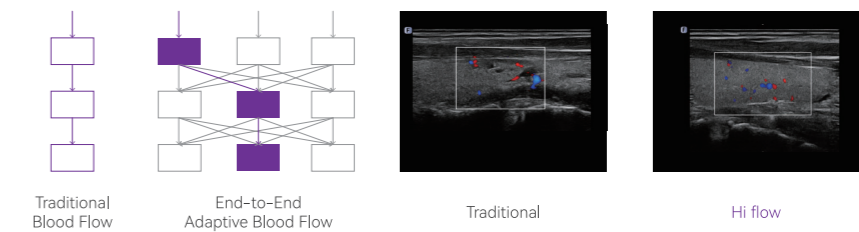
### Hi Platform

“Hyper Imaging” is the 2<sup>nd</sup> generation beam forming technology. Multiple frames are acquired on every launch sequence for more detailed information.



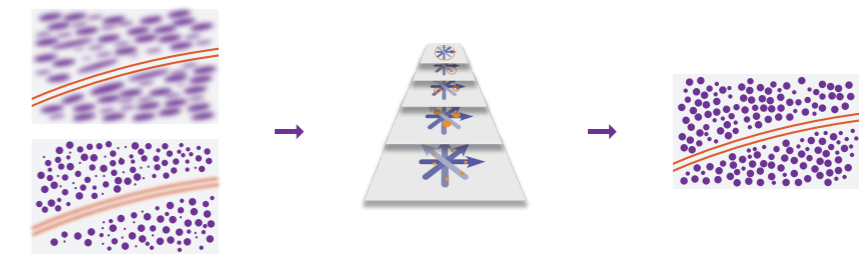
### Hi Flow

Hi Flow uses end-to-end adaptive blood flow algorithm, which can automatically choose the optimal data combination way after multiple times calculation, thus greatly improving the overall performance of blood flow.



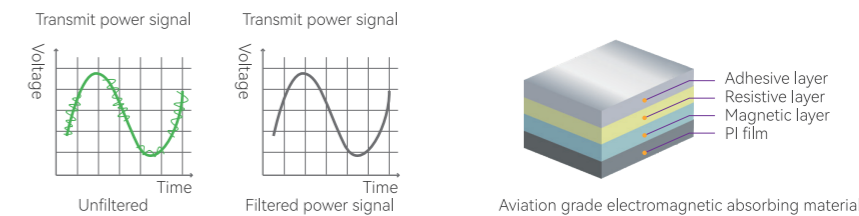
### SNS+

Automatically detect and suppress the speckle noise based on multi-dimension algorithm. Acquire and enhance tissue details from different directions, easily capture sub-millimeter level lesion or large organ boarder.

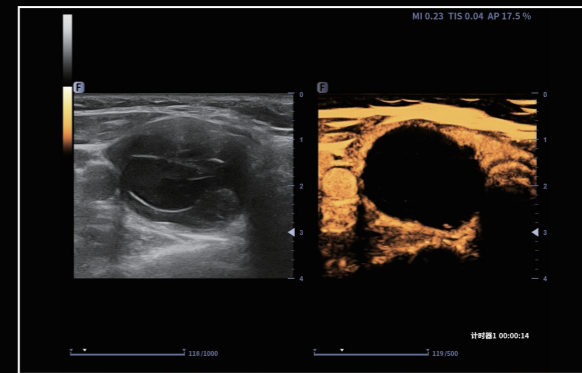
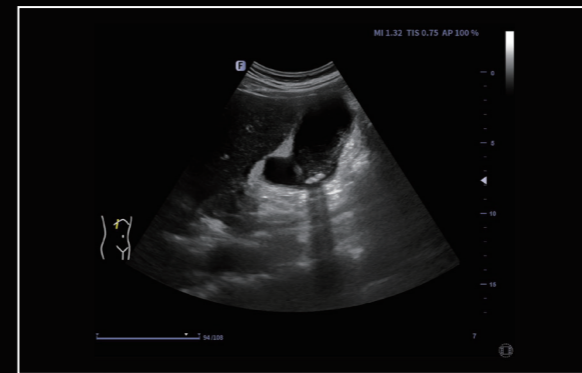
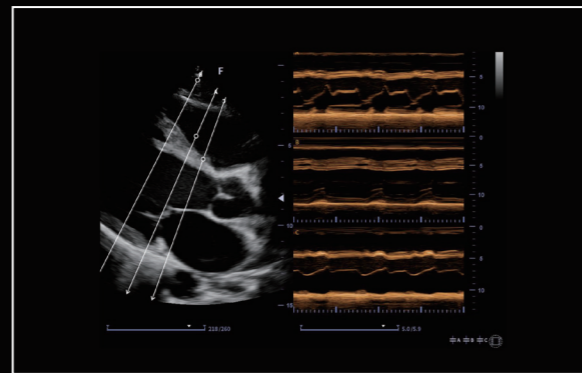
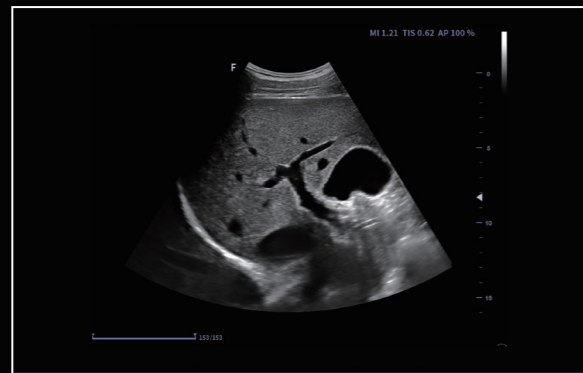
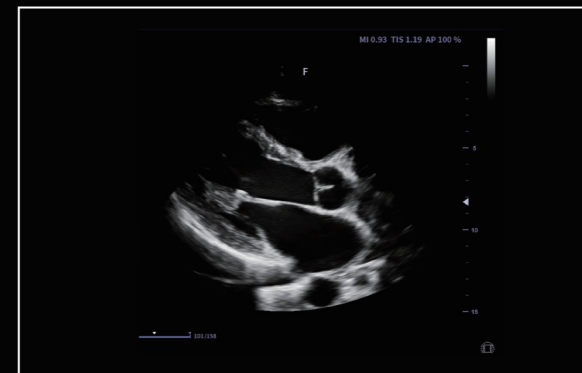
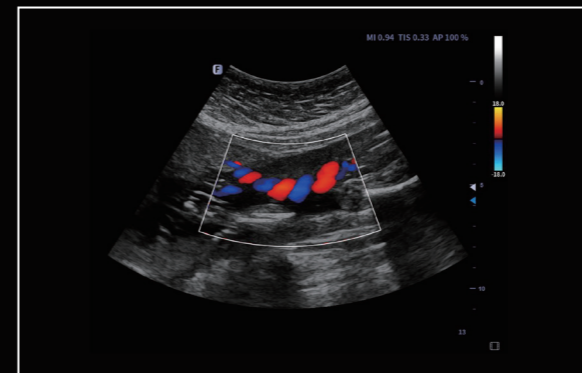
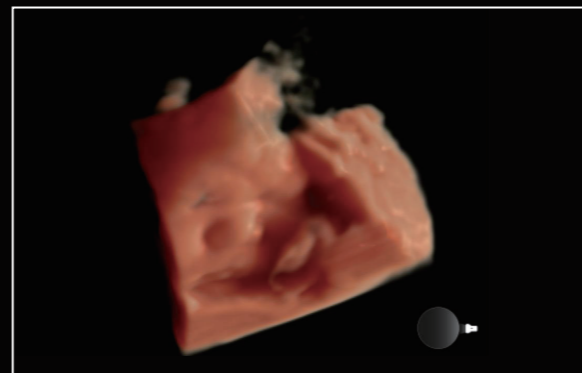
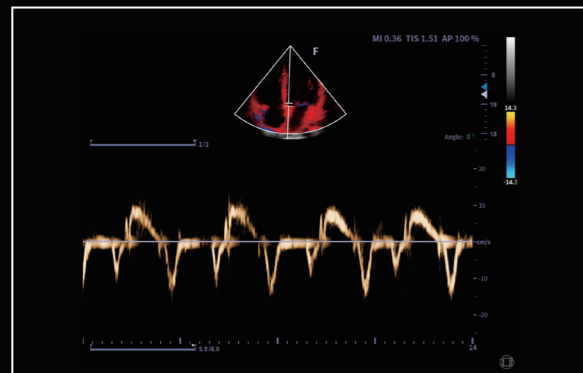
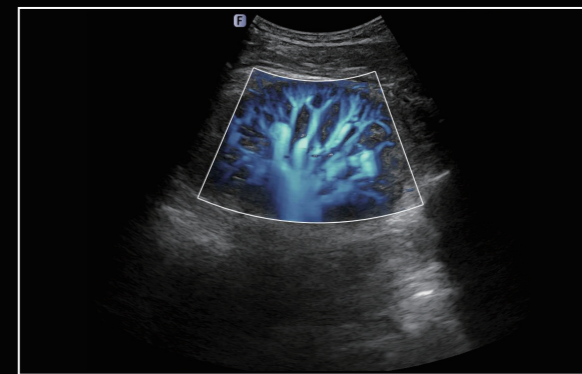
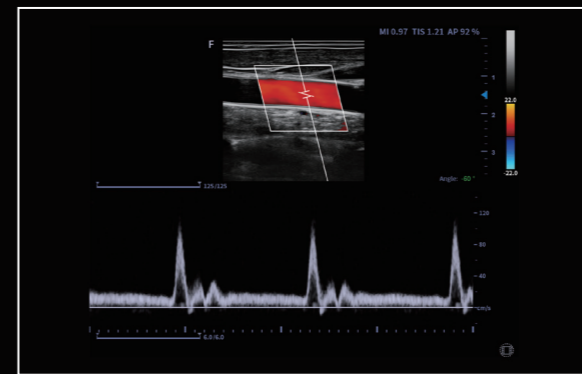
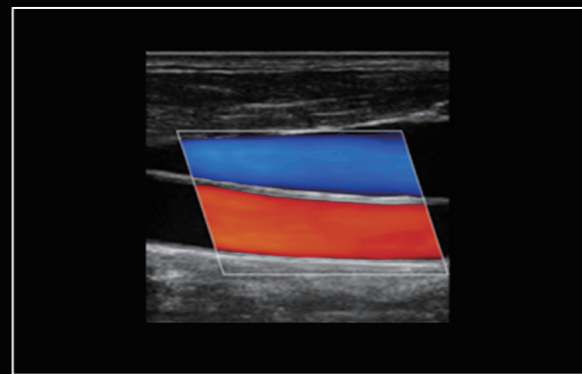
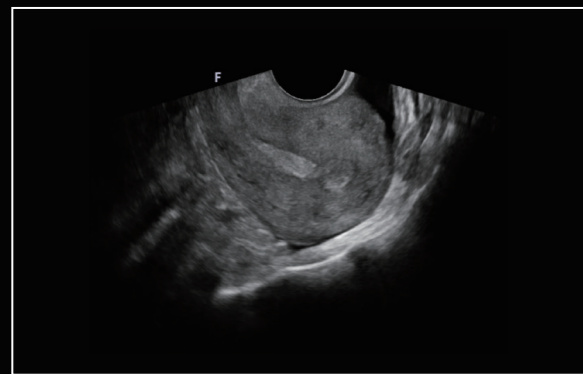
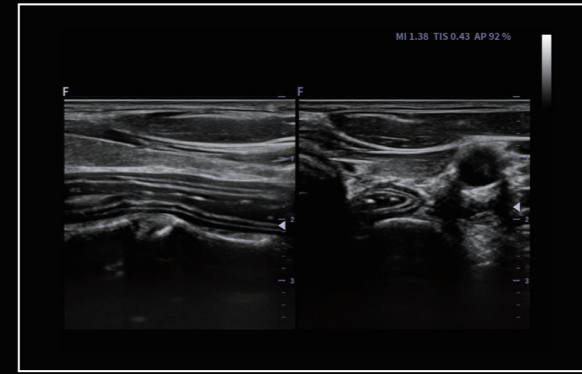
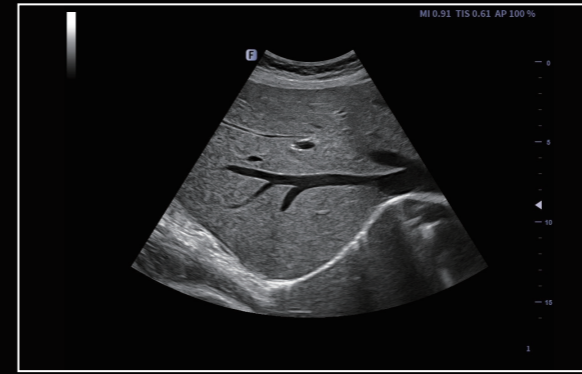
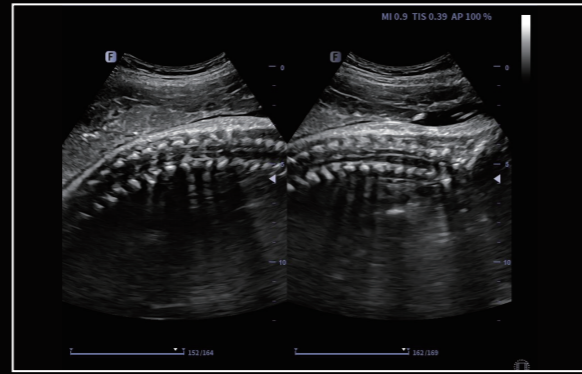
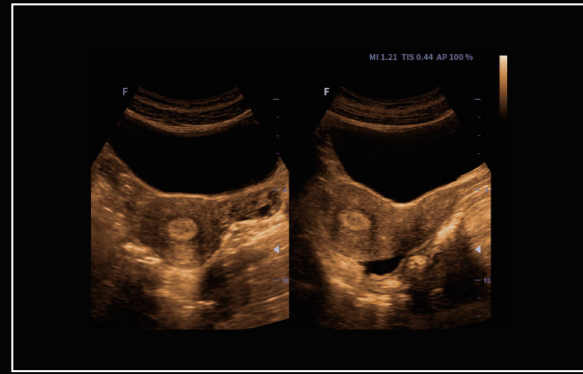


### OMG Original Mag Guard

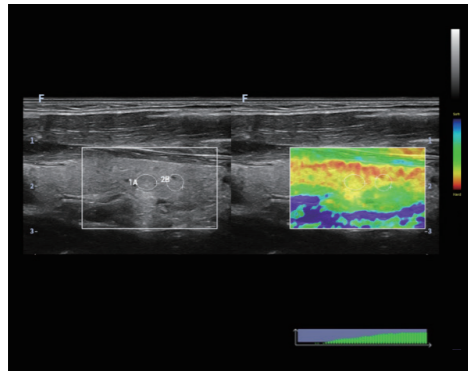
The electromagnetic guard processing of whole system is to prevent the ultrasonic signal from electromagnetic interference during the transmission process, to ensure the stability of the signal transmission, so as to obtain a clearer image.



# Outstanding Clinical Images

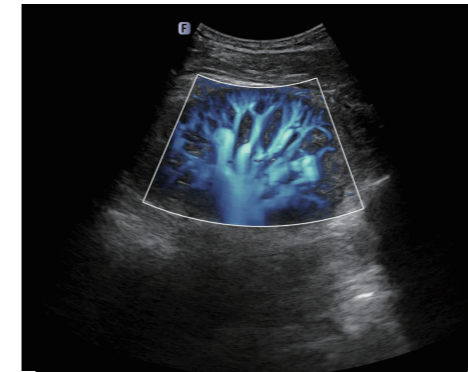


# Powerful in Diagnostics, Diverse in Applications



## Elastography

Real time elastography is a new noninvasive and painless technique that can help determine the hardness of organs and other structures such as breast, thyroid. Elastography imaging provides users with dynamic visual information and displays the rigidity of organs, which is helpful for direct and quantitative diagnosis and treatment.

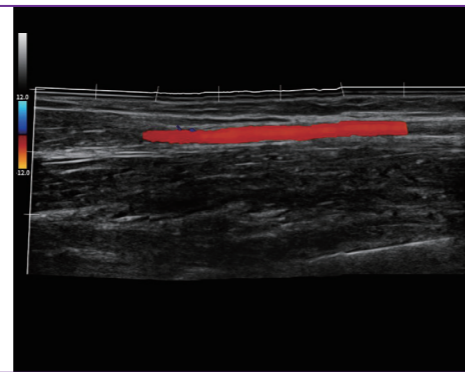


## Micro Flow Imaging (MFI)

Accurately distinguish between low-speed blood flow and tissue clutter, which is more conducive to the display of micro blood flow, enabling better and detailed visualisation of microvessels and low-speed blood flows.

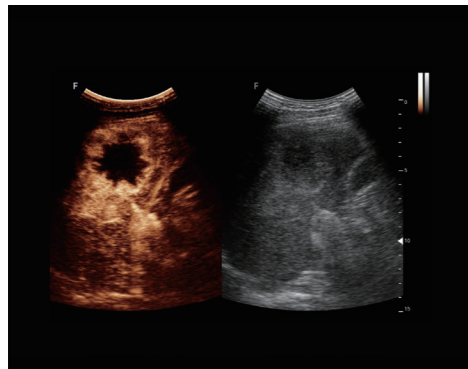
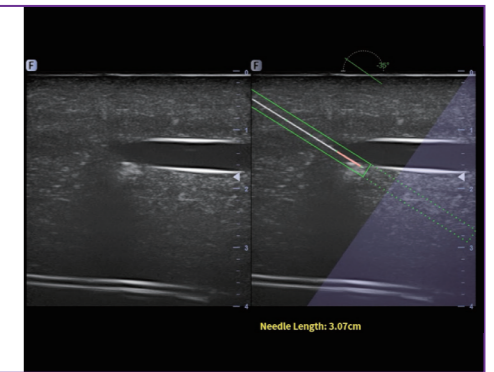
## Panoramic & Color Panoramic

The extended field of view displays more image information without sacrificing image quality. A convenient approach for observing big-size organs, especially for MSK structure, which is applicable in both B and C modes.



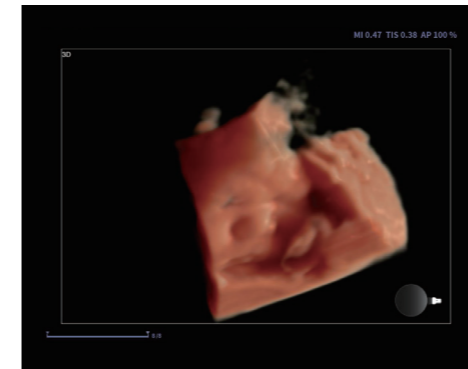
## eBiopsy+

The image of the puncture needle is enhanced by the deflection of the acoustic beam, supporting needle enhancement, needle tip red rendering, virtual needle passage, scale line and auto steering.



## Contrast Imaging

Pulse inversion contrast-enhanced ultrasound imaging technology can accurately extract the second harmonic of contrast microbubbles, realize contrast-enhanced imaging with high contrast-to-tissue ratio, and provide more detailed diagnostic information for doctors.

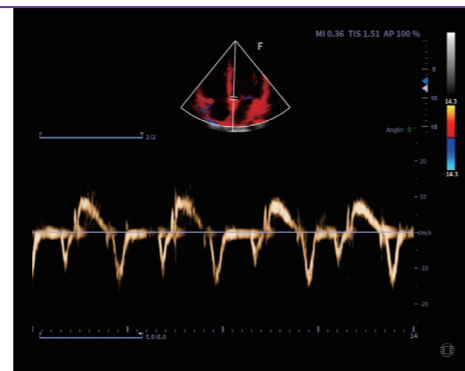


## fLive

fLive is an advanced rendering mode that allows doctors to adjust light source directions and brightness, generating lifelike images of fetus with human skin-like texture.

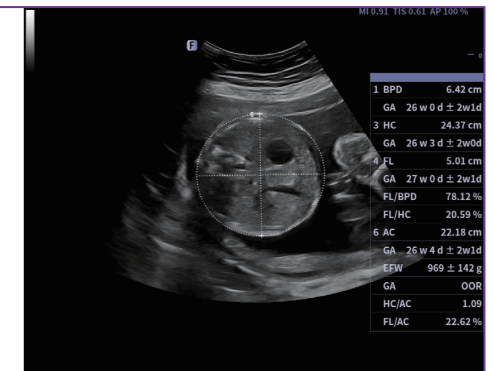
## Tissue Doppler Imaging

Tissue Doppler Imaging (TDI) is a robust and reproducible echocardiographic tool that employs the Doppler effect to assess muscle wall characteristics throughout the cardiac cycle including velocity, displacement, deformation, and event timings. It has permitted a quantitative assessment of both global and regional function and timing of myocardial events.



## Auto OB

Provide automated fetal biometry measurements, including BPD, OFD, AC, HC, FL, HL. Streamline obstetric examination and contribute to greater precision and efficiency.



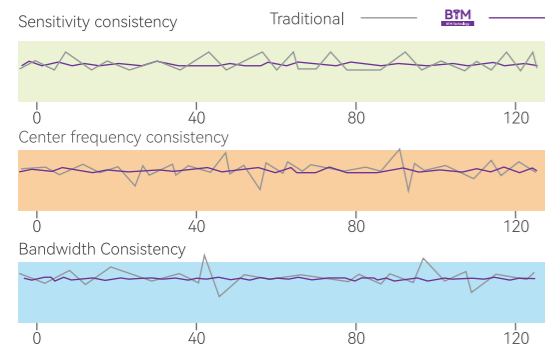


## Premium Technology

Focus & Fusion provides multiple transducers for different clinical areas of your need

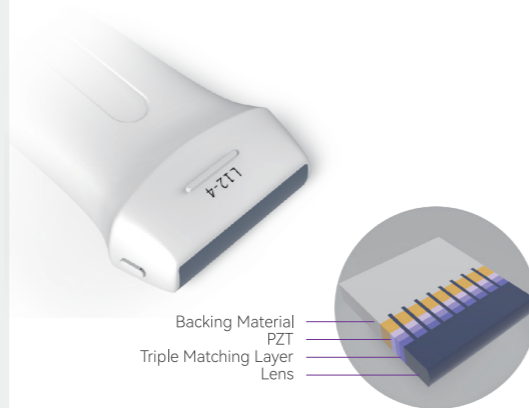
### Bonding Technique

By uniform bonding process, adhesive to interconnect ceramic and lead is well controlled (max thickness: 1 $\mu$ m) to improve performance uniformity among elements.



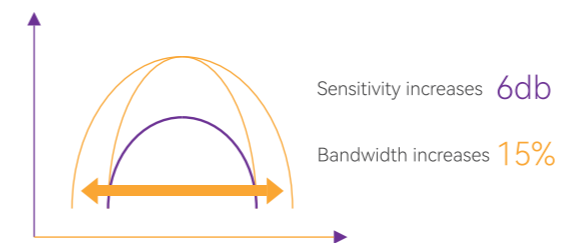
### Triple Matching Layers

Higher sensitivity and wider bandwidth can be achieved through triple matching layers.



### Micro-elements Cutting

By micro-elements cutting, one element is cut into several sub-elements to increase sensitivity and bandwidth of transducer.



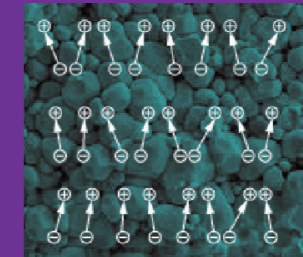
## XDiamond

## Single Crystal Probe

Efficiency improves **85%**

Sensitivity increases **6db**

Bandwidth increases **25%**



Traditional Piezoelectric Ceramic Probe Technology

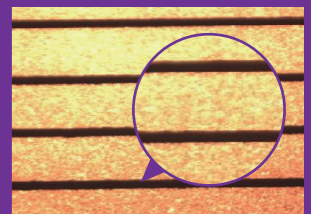


Single Crystal Probe Technology

Using a new cutting process, effectively extending the service life of probe.

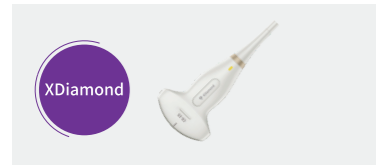


Conventional Cutting Process



Micron Level Anti-chipping Cutting Technology

# Transducers



**Convex C6-1s**  
Applications: Abdomen, Obstetrics, Gynecology



**Convex C5-1**  
Applications: Abdomen, Obstetrics, Gynecology



**Micro-convex MC10-3**  
Applications: Pediatrics, Cardiology



**Intracavitary EC9-4**  
Applications: Obstetrics, Gynecology, Urology



**Convex Volume V6-2**  
Applications: Abdomen, Obstetrics, Gynecology



**Intracavitary Volume EV10-3**  
Applications: Obstetrics, Gynecology, Urology



**Linear L12-4**  
Applications: Small parts, Vascular, MSK



**Linear L17-5**  
Applications: Small parts, Vascular, MSK



**High-Density Linear L13-3**  
Applications: Small parts, Vascular, MSK, Breast



**Linear L25-10**  
Applications: Small parts, Vascular, MSK



**Intracavitary EC10-3**  
Applications: Obstetrics, Gynecology, Urology



**Phased Array P5-2**  
Applications: Cardiology, Abdomen, TCD



**Phased Array P8-2**  
Applications: Abdomen, Pediatric cardiology



**Phased Array P10-3**  
Applications: Abdomen, Neonatal cardiology



**Phased Array P5-1s**  
Applications: Cardiology, Abdomen, TCD

# Enhanced Ergonomics



High-definition 21.5-inch monitor



13.3-inch high sensitive touch screen



Adjustable and intuitive control panel without keyboard



Gel warmer (two temperature options)



Cable management solution



Built-in battery for scanning



- | fAssist
- | Magnifier
- | DICOM 3.0
- | Auto Optimization
- | Auto Volume Flow



Focus & Fusion



Focus & Fusion Healthcare (Hangzhou) Co., Ltd.

Building 4, No.17 Binhe Road, Linan District, Hangzhou 311305, Zhejiang, P.R.China

Tel: +86 571 58612035 Email: [ims@focus-fusion.com](mailto:ims@focus-fusion.com) Website: [www.focus-fusion.com](http://www.focus-fusion.com)



Facebook



LinkedIn