

# TO LIGHT UP LIFE WITH INNOVATION

用创新点亮生命



## 信念

帮助亿万地球人健朗地越过115岁生命线

Faith: Breaking barriers to support billions of people  
thrive beyond 115 years



## 使命

提供能延长和重塑生命的可普惠化真善美方案

Mission: To provide trustworthy and universal access to  
state-of-the-art solutions of prolonging and reshaping all lives



## 远景

成为肿瘤学微创医疗领域的新兴科技领导者

Vision: To become a leading player of emerging medical  
technologies in minimally invasive oncology



## 价值观

质量 诚信 责任 效率 创新 争先 敬业 协作

Values: Quality Integrity Accountability Efficiency Innovation

Aspiration Dedication Collaboration

# TACTIC<sup>®</sup> Antarctic<sup>™</sup> AT-2020 CRYOSURGICAL SYSTEM



FREEZE

TARGETING KNIFE

ABLATION



AccuTarget MediPharma (Shanghai) Co., Ltd.

Address: No.388 Furonghua Road, Pudong New District, Shanghai | 201318

Telephone: (021) 38019300

Fax: (021) 38019500

Website: www.accutargetmed.com

Email: sales@accutargetmed.com

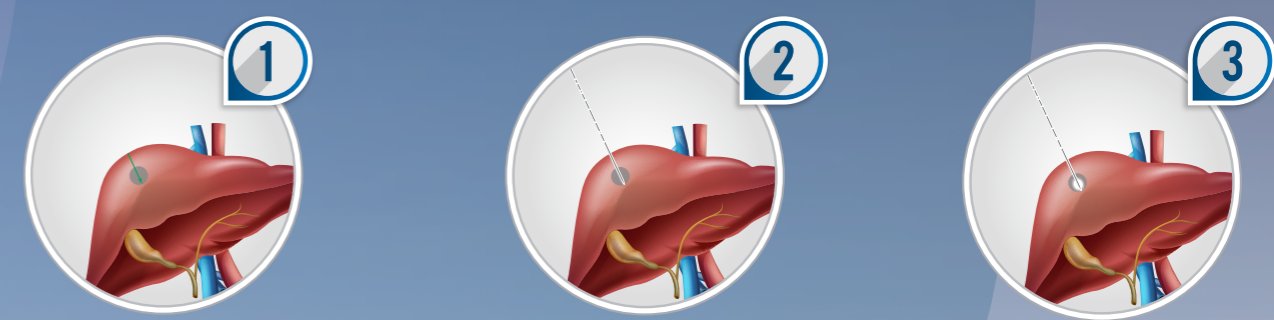
Hotline: 4001334388



CE certification pending



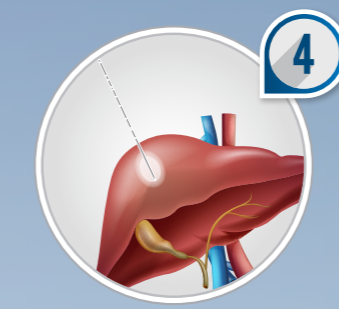
Flowchart of TACTIC® Antarctic™ Cryosurgery



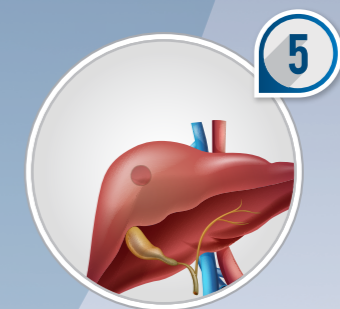
1 The surgeon can locate the tissue lesion and plan a puncture path based on the CT or B-scan ultrasound images.

2 After local anesthesia, insert the single-use cryoablation needle into the tissue lesion gradually.


3 After inserting the single-use cryoablation needle into the lesion, turn on the Freezing mode, and the ice ball will increase gradually in size.



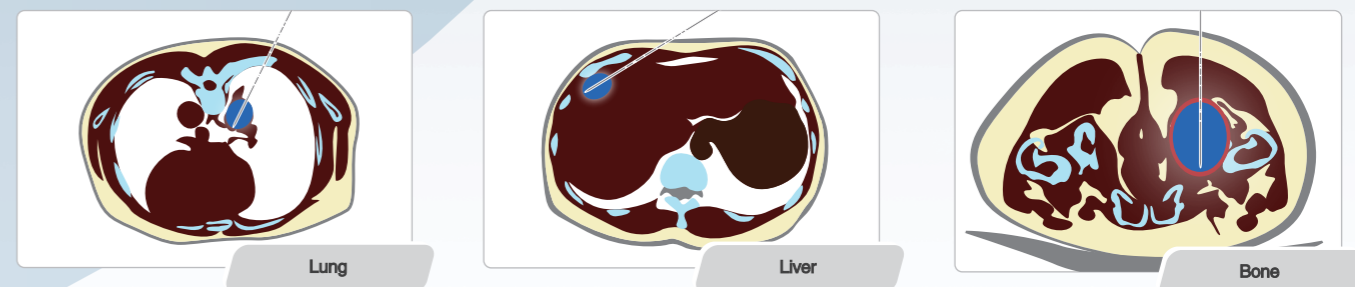
4 With continuous cryoablation, the ice ball will further increase in size until it covers the tissue lesion completely.



5 After the second cycle of cryoablation, turn on the High Temperature mode until the single-use cryoablation needle can be withdrawn from the tissue lesion. The surgery is completed.



Puncturing Simulation Diagram of Each Organ



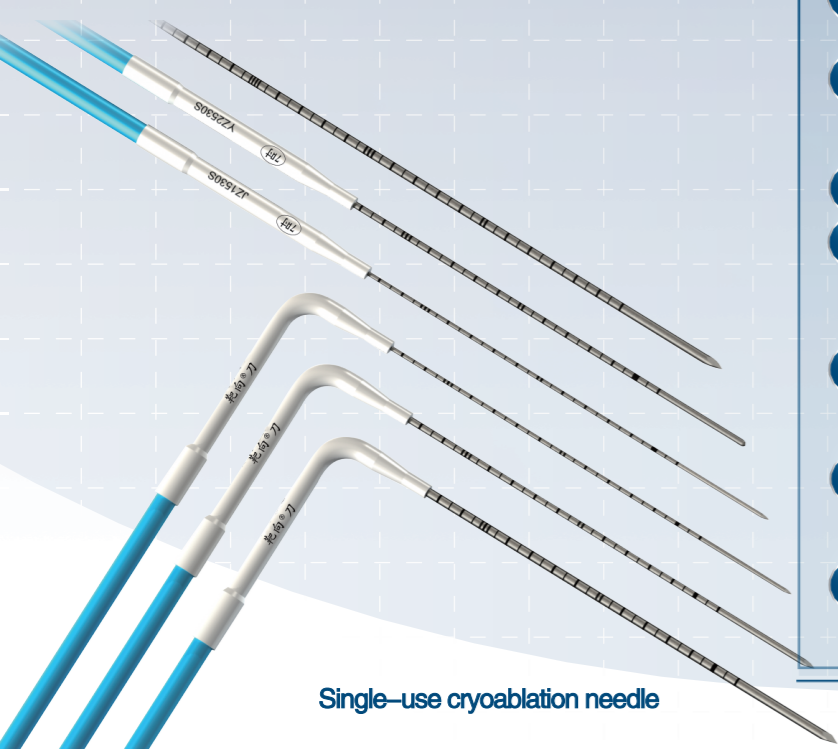
**TACTIC® Antarctic™ Cryoablation Equipment**

Tactic® Antarctic™ Cryoablation Equipment is derived from the Joule–Thomson effect, which is a high-tech tumor treating device that integrates two medical technologies of “targeted” and “minimally invasive” therapy. It breaks through the limitations of traditional refrigerants, adopting regular nitrogen as a refrigerant, which can inactivate tumor cells without damaging normal tissues other than the tumor cells, to stimulate the body’s immunity and improve the efficacy of treatment as a green and minimally invasive treatment.



**Product Features**

- 1 Universal refrigerant, With abundant cryoenergy.
- 2 Utilizing low-pressure nitrogen/argon to deliver superior performance and enhance market flexibility.
- 3 Featuring a single ablation needle channel, tailored for the ablation of small nodules and tumors measuring less than 3cm in diameter.
- 4 Safe and painless, with outstanding performance.
- 5 Ultra-low temperature of -170°C for effective cryotherapy, coupled with an efficient and rapid thawing procedure capable of reaching temperatures up to 60°C.
- 6 The built-in marking function of the needle body allows the surgeon to clearly control the depth of needle insertion, which is convenient for clinical operation.
- 7 With 72 models and specifications available, it provides a variety of clinical solutions to achieve true conformal cryoablation.
- 8 The foldable screen design enhances portability and simplifies logistics during device transport.



Single-use cryoablation needle